

Welcome To 'Art at The RCH'



THE ROYAL CRESCENT

HOTEL & SPA

BATH



*"Art washes away from the
soul the dust of everyday life"*

– Pablo Picasso

Allow us to introduce you to our carefully curated art collaborations that showcase a dynamic range of modern art pieces and inspirational sculptures.

Art at The RCH enhances wellbeing and helps to create a sure feeling of sense of place. Created by an eclectic mix of world-renowned artists and much loved local artisans, these works of art are thoughtfully featured to enhance your journey through the hotel.

All Art at The RCH pieces are available for purchase, upon request.

Experience Art

To fully embrace 'Art at The RCH', we are pleased to arrange bespoke **Art Tours** that take in the local art scene, in association with Portfolio Art. For those who favour the art of horticulture, we are also able to arrange personalised **Garden Tours** for your enjoyment.

Please speak to the Concierge Team or visit royalcrestent.co.uk for more information.



Ronald F. Smith RSW RGI PAI

Was born in Glasgow in 1946. He graduated in Drawing and Painting from the highly respected Glasgow School of Art in 1969. His awards include the David Cargill Award and the John Cunningham Award. He was elected a member of the Royal Glasgow Institute of Fine Arts in 1999 and the Royal Scottish Society of Painters in Watercolours in 2008. In 2006 Ronald was named one of the top Scottish artists to invest in by the Glasgow Herald. Ronald's subject matters hold a familiarity - landscapes, sky scenes, and still lifes - yet he manages to create an intensely unfamiliar atmosphere with his paint. His painterly style forms a large part of the work's attraction, with his rough pastel scrapes of paint under which glimpses of sumptuous colour can be seen.



Mick Morgan

Tucked away in the gloriously secluded Welsh countryside, ceramicist Mick Morgan has relished the peace and tranquillity of his surroundings to hone the precision his craft.

His large figurative vessels are elegant forms that range between four to five foot in height, each design resembling an abstract female torso with a slender elongated neck. Simple in colour with natural earthy textures and tones, their surfaces are almost like that of a well-rounded pebble and capture a sense of timeless simplicity. Morgan points out that his designs are not directly inspired by nature, yet within his rural environment, and his use of natural materials and traditional methods it can be sensed that lifestyle and craftsmanship are indeed entwined. Over the years he has built his own kilns ranging from 30 to 200 cubic feet, allowing him to experiment with a dynamic range of size and form.

After completing a study of ceramics at the Cardiff College of Art in 1974 Morgan set up his studio in Talog, Carmarthen, from where he still runs his practice today. He lectures locally at Carmarthen University and exhibits his large ceramic vessels regularly with Axle Arts in Bath.



David Martin RSW RGI

Though diverse and varied in his artistic influences, David Martin's signature style is striking in its originality, clarity and beauty, culminating in work that makes him one of the 20th century's most important Scottish painters. Born in 1922, Martin trained at the Glasgow School of Art, working with prominent artists such as Hugh Adam Crawford, Ian Fleming and David Donaldson, all of whom had a strong bearing on his development as a landscape and still life painter. Originally interested in portraiture, Martin moved on to the sparsely populated Scottish landscapes and strong, pure still life that he is known for, via his interest in textile design taught by the Scottish designer Robert Stewart.

Anna Gillespie

Over the last 15 or so years Anna Gillespie has attempted through her work to recapture a feeling of immersion in nature, often employing beech nuts, acorn cups, twigs and galls - with these natural found objects then cast into bronze. The artist considers the act of gathering each autumn to be a meditation; on the beauty of nature and our human place within it. She describes it as humbling, viscerally realising the way in which we humans are just another mass product of nature - all fundamentally the same and yet no two alike. In her organic work the individual is subsumed by the experience of melding with nature and in simply another product of it.

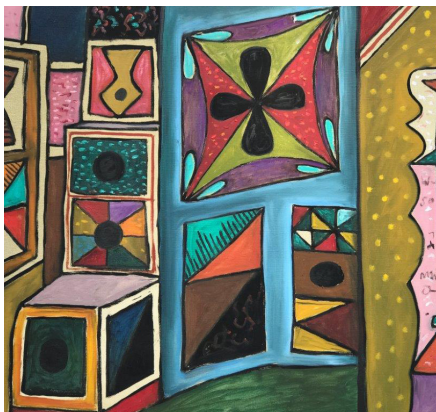


Anna Gillespie was born in 1964 in Farnham. Having obtained degrees from Oxford University (Philosophy, Politics and Economics) and the London School of Economics (International Relations), 1992 saw a change of direction and the decision to become a full time sculptor. Anna qualified as a stone mason in Bath before travelling to Italy to study with the sculptor and master carver Nigel Konstam. In 1998 she took an MA in Fine and Media Arts at Cheltenham, and became an Associate of the Royal Society of British Sculptors in 1999.

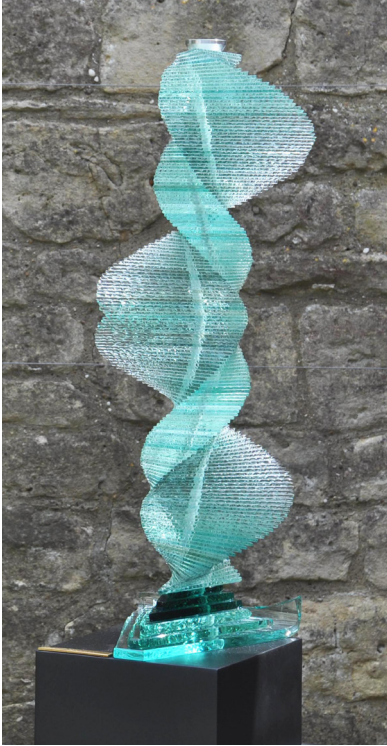
Anna has had numerous solo shows with the prestigious Beaux Arts galleries in Bath and London. Her work is in the collection of the former Chairman of the V&A museum, and the Chairman of the Cass sculpture Foundation, amongst many many others all over the world.

Alan Davie

Alan Davie (1920-2014), born at Grangemouth, Stirlingshire, is one of Britain's most internationally acclaimed artists and is Scotland's most important artist of the twentieth century with works in public collections across the world. He was the first British painter - and perhaps the first of all European artists - to realise the vitality and significance of American Abstract Expressionism. Throughout his life Alan Davie obsessively drew and painted, producing paintings of startling originality, vitality and daring. Combining imagery derived from different world cultures with a love of music and language, Davie's paintings are a complex yet joyous celebration of creativity that combine the expressive freedom of abstraction with a wealth of signs, symbols and words.



The Estate of the Artist is represented by Alan Wheatley Art in London.



Margaret Lovell D LITT (HON) DIP FA (LOND) FRBS RWA

Is an award-winning sculptor and a Fellow of the Royal British Society of Sculptors. Following her training at the Slade, London and at the Academy of Fine Art in Florence, she has carried out numerous commissions and exhibited across the UK, Europe and the USA.

Her works are largely in bronze and vary in size from miniature to monumental. They range from lifelike portraits to sculptures that express natural forms and soaring movement.



Ben France

Before moving to Bath two years ago, Ben lived and worked in London, converting his spare room into a studio where he taught himself with hard work and late nights the art of working with glass. "Glass has a magical quality, I love working with it and creating beautiful thought provoking sculptures". As Anton Chekhov once said, "don't tell me the moon is shining; show me the glint of light on broken glass". Ben hand cuts every piece of glass to create his bespoke sculptures, candle stands and furniture. He now has a studio in Bath, no longer a spare room. Ben's pieces can be set up inside your home or in your garden, for that elegant one of a kind piece of art.



Stephen Myburgh

Was born in Durban, South Africa. After his national service he left South Africa and began a long voyage of discovery. In 1997 his wanderings brought him to London. It was in London that he started to explore metal work on a large scale. In 1998 in partnership with Caroline Fletcher (whom he would later marry), Myburgh Designs launched the Mood Swing collection.

"Nature and its subtleties have always been my design program. But opulence and luxury offer the theatre that I love to live with. Copper is a wonderful medium to merge these two desires". Stephen Myburgh's swings are handmade sculptures that bring into your homes this feeling of natural opulence. Soft forms that float with a strange weightless authority.